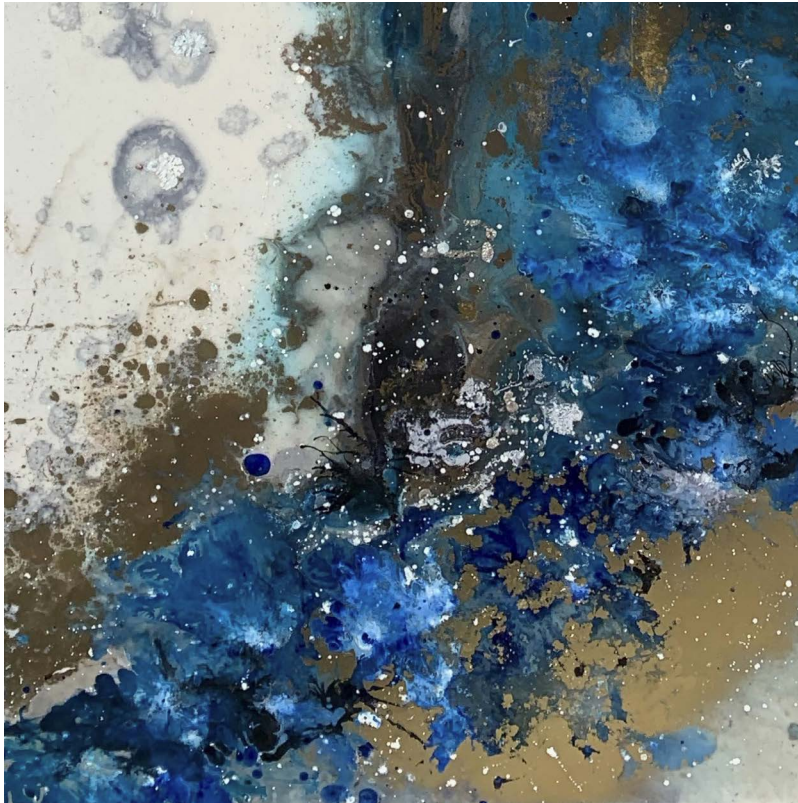


FILIPA FARIA DE CARVALHO

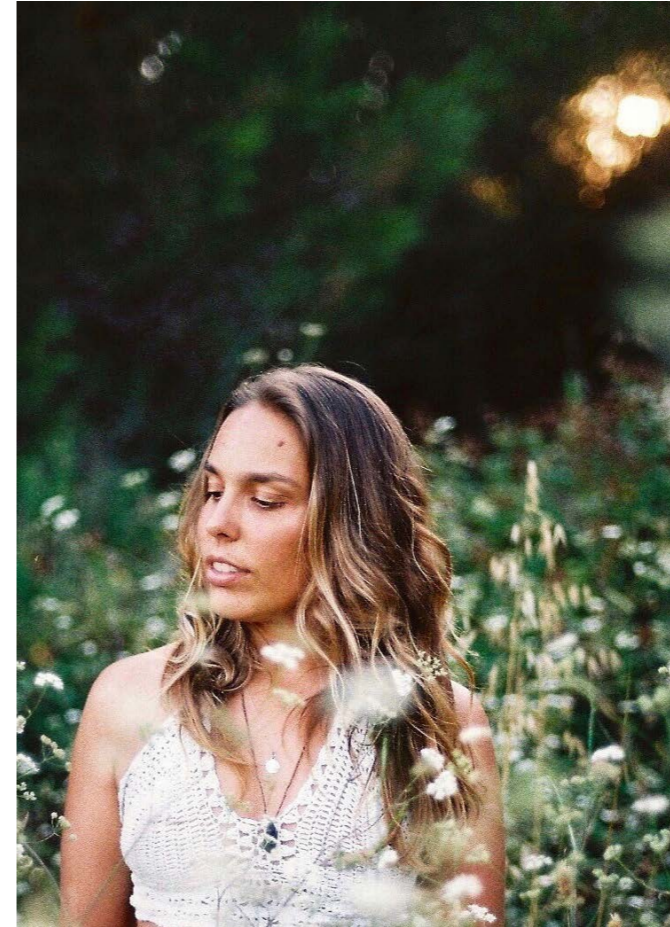


A Collection

FILIPA FARIA DE CARVALHO

A r t i s t

"Painting is a unique portal that allows me to express the beauty I see in this world beyond the mundane. I believe that what we see externally and our perception of an art piece is a direct reflection of our experiences, limitations and dreams."

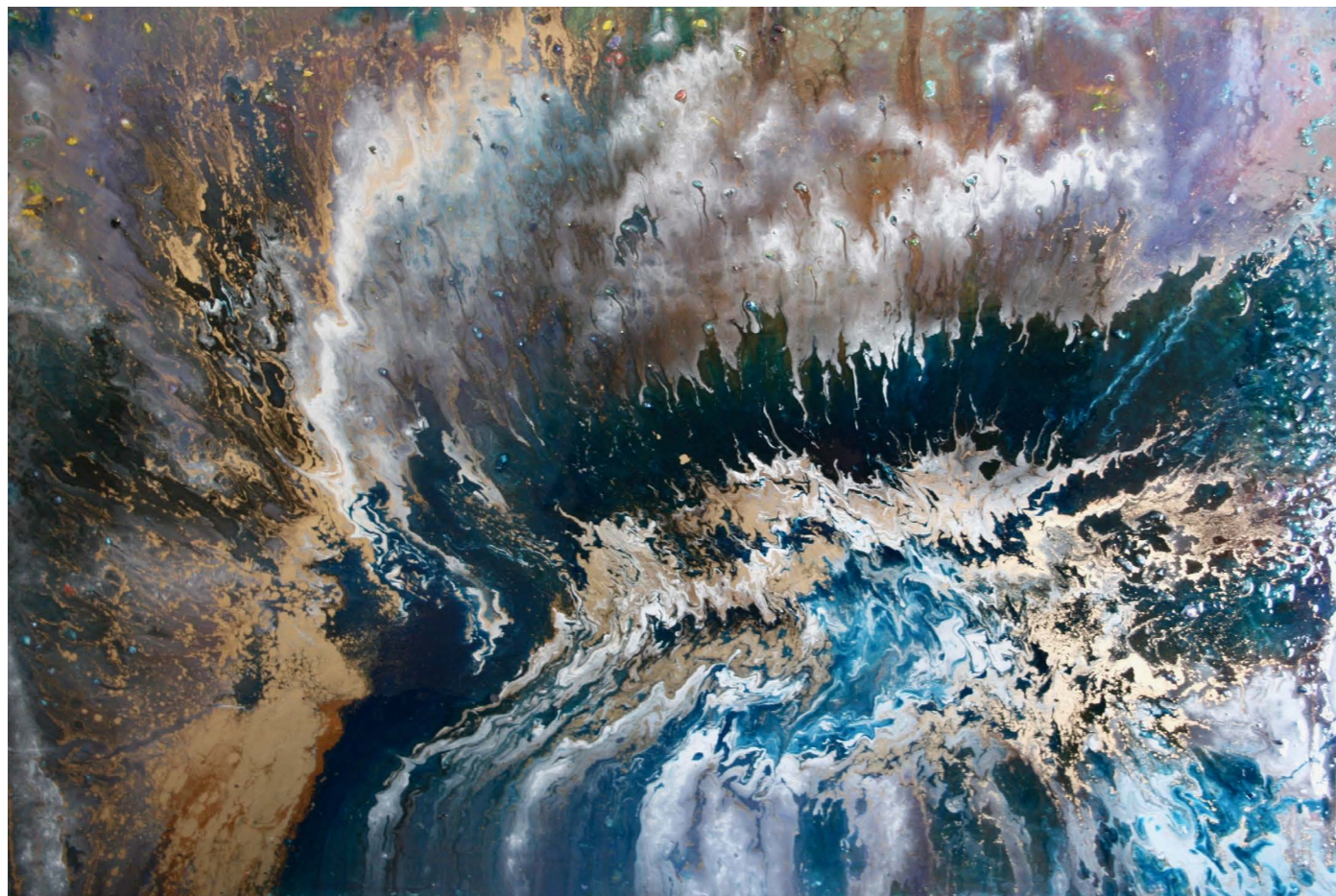


Filipa Faria de Carvalho is a Portuguese artist who was fortunate enough to grow up and live in numerous continents and countries, learning several languages as a result.

While artistic drive was present from an early age, it was through her BA in Business & Hotel Management which further exposed her to different cultures and philosophies, that prompted a desire to pursue a career in art. Her lifetime of travel is reflected in her artwork as a continual source of inspiration.

Filipa's fascination with the diverse landscapes of the universe, in particular their interconnectedness, was a main source of creativity. This collection of paintings intends to mirror both the vastness of our galaxy, along with its delicate and intricate details; whilst simultaneously inspiring the limitless imagination residing in the collective consciousness. The techniques used were a mixture of acrylics, resin and mixed media, creating a combination of textures reflecting both the depth and subtlety of the metaphysical.

Filipa continues to develop her projects at *The Sculpture Factory*, a collective art space in Sintra, Portugal.



Acrylic and Resin, 100 x 70 cm



Acrylic and Resin, 150 x 100 cm

Ice | 2019



Acrylic, 100 x 50 cm

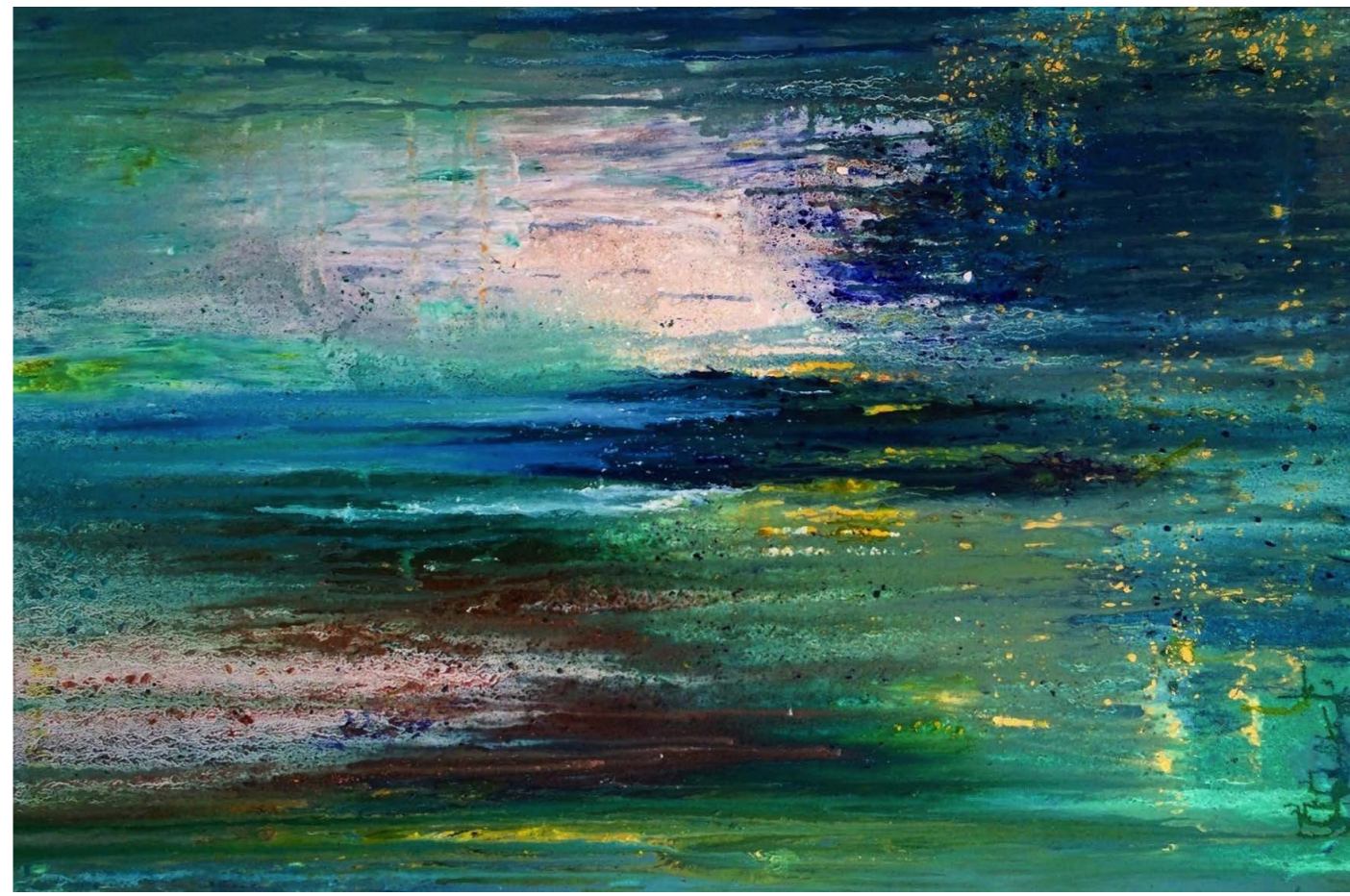
Ice details | 2019



Acrylic, 100 x 50 cm



Acrylic and Resin, 100 x 70 cm



Acrylic and Mixed Media, 120 x 80 cm

Oblivion | 2017



Acrylic and Resin, 120 x 80 cm

Marble Sea | 2018



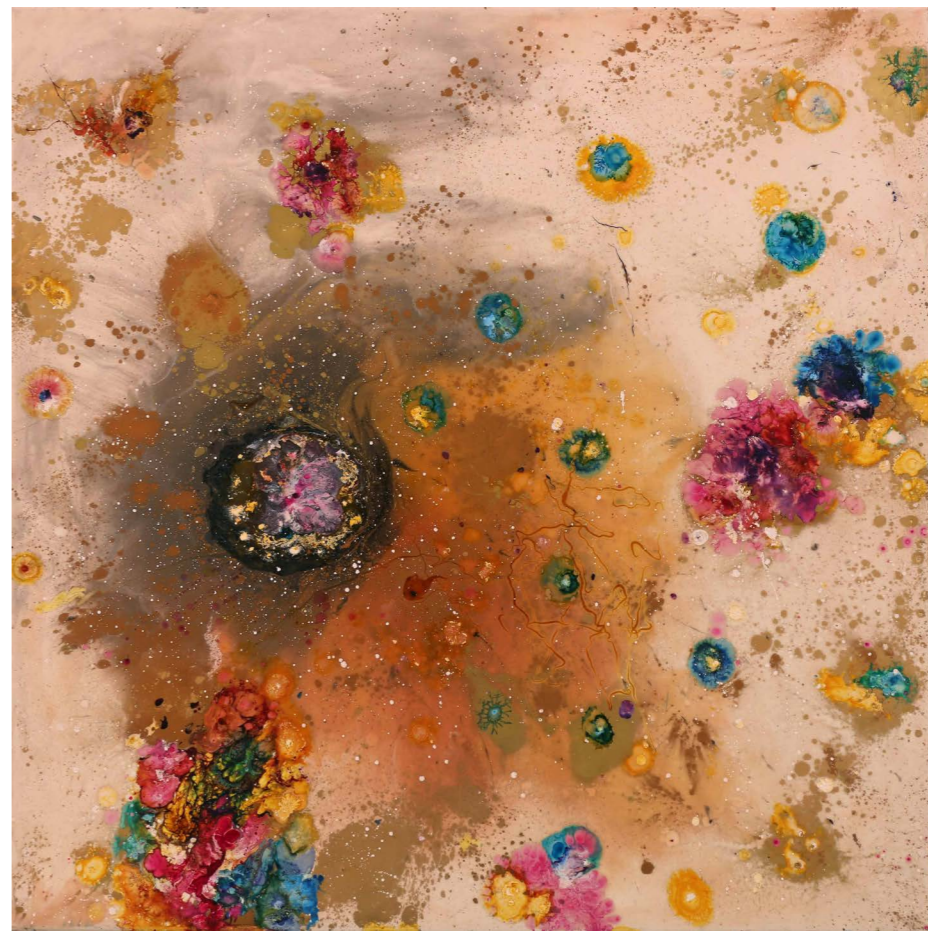
Acrylic and Mixed Media, 100 x 70 cm

The Red Sea | 2017



Acrylic and Mixed Media, 90 x 90 cm

Birth | 2019



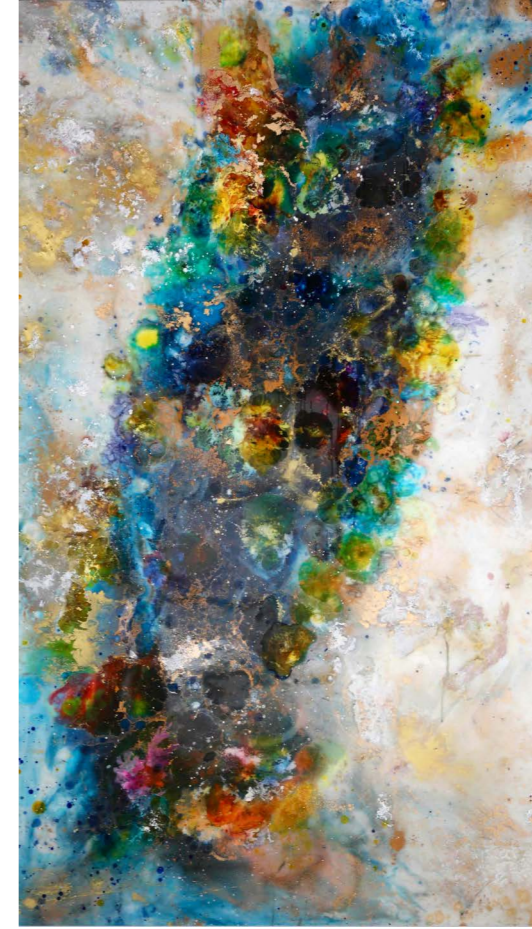
Acrylic and Resin, 90 x 90 cm

Ströhiminn | 2019



Acrylic and Mixed Media, 80 x 120 cm

Milky Way | 2019



Ink and Resin, 100 x 175 cm



Acrylic and Resin, 100 x 80 cm



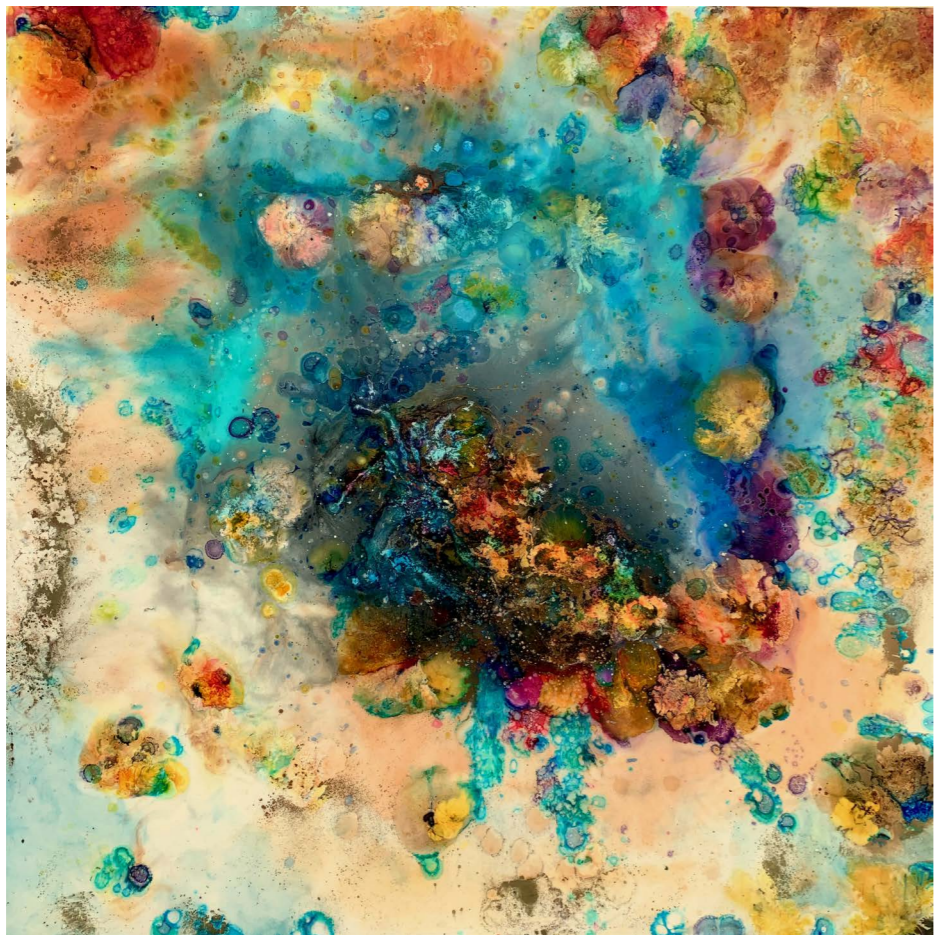
Acrylic and Resin, 100 x 80 cm



Ink and Resin, 200 x 150 cm



Ink and Resin, 200 x 150 cm



Ink and Resin, 160 x 160 cm



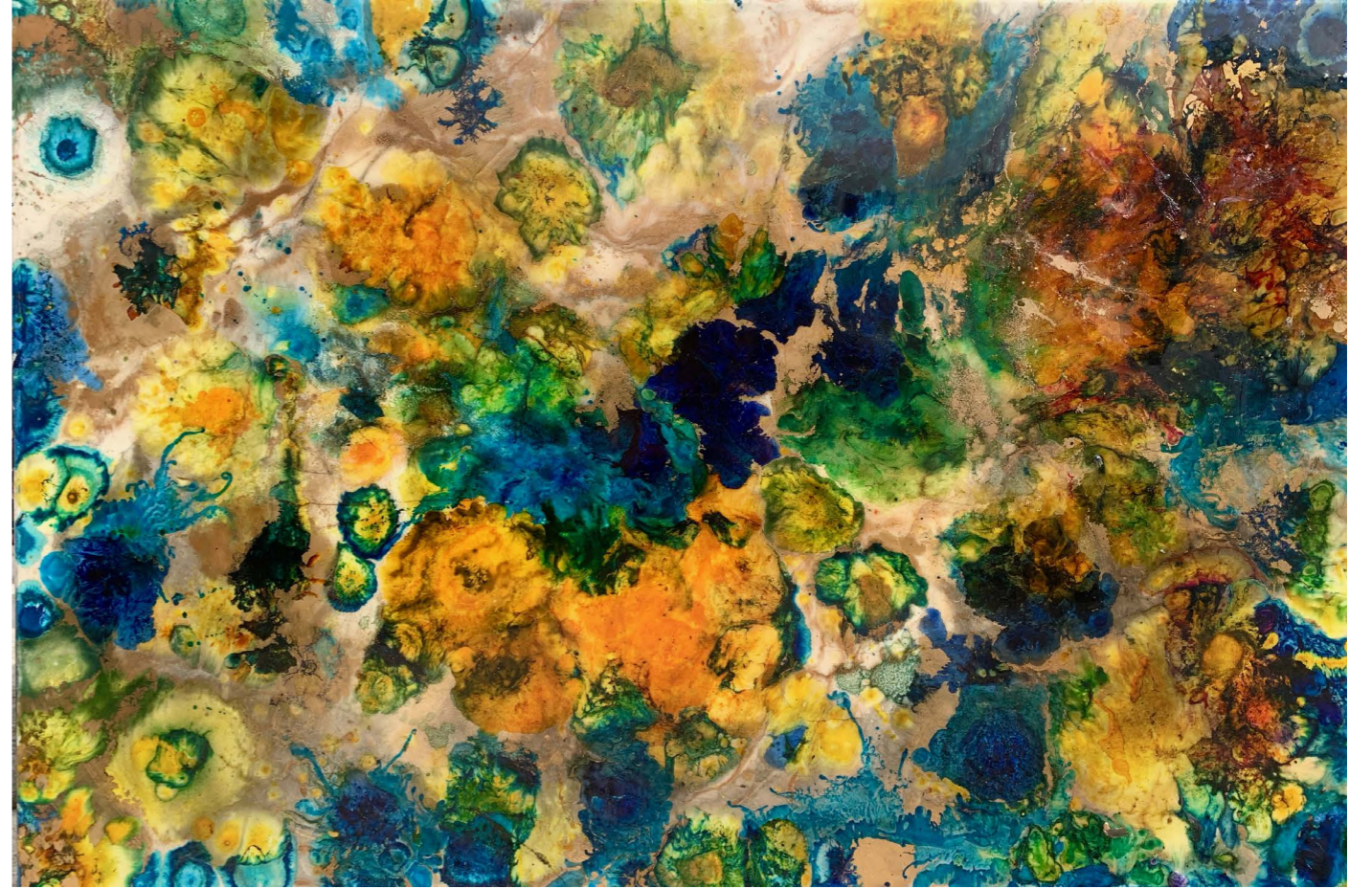
Ink and Resin, 160 x 160 cm



Acrylic, 60 x 60 cm



Acrylic, 60 x 60 cm

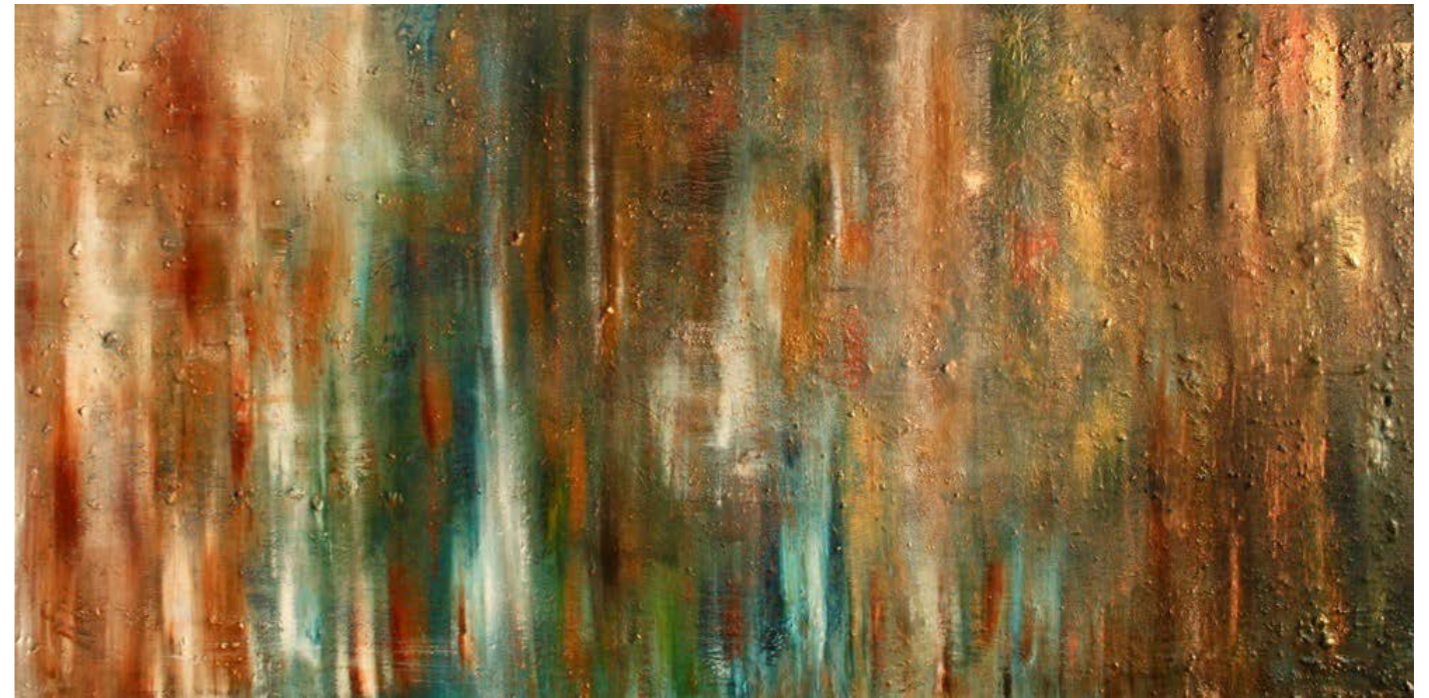


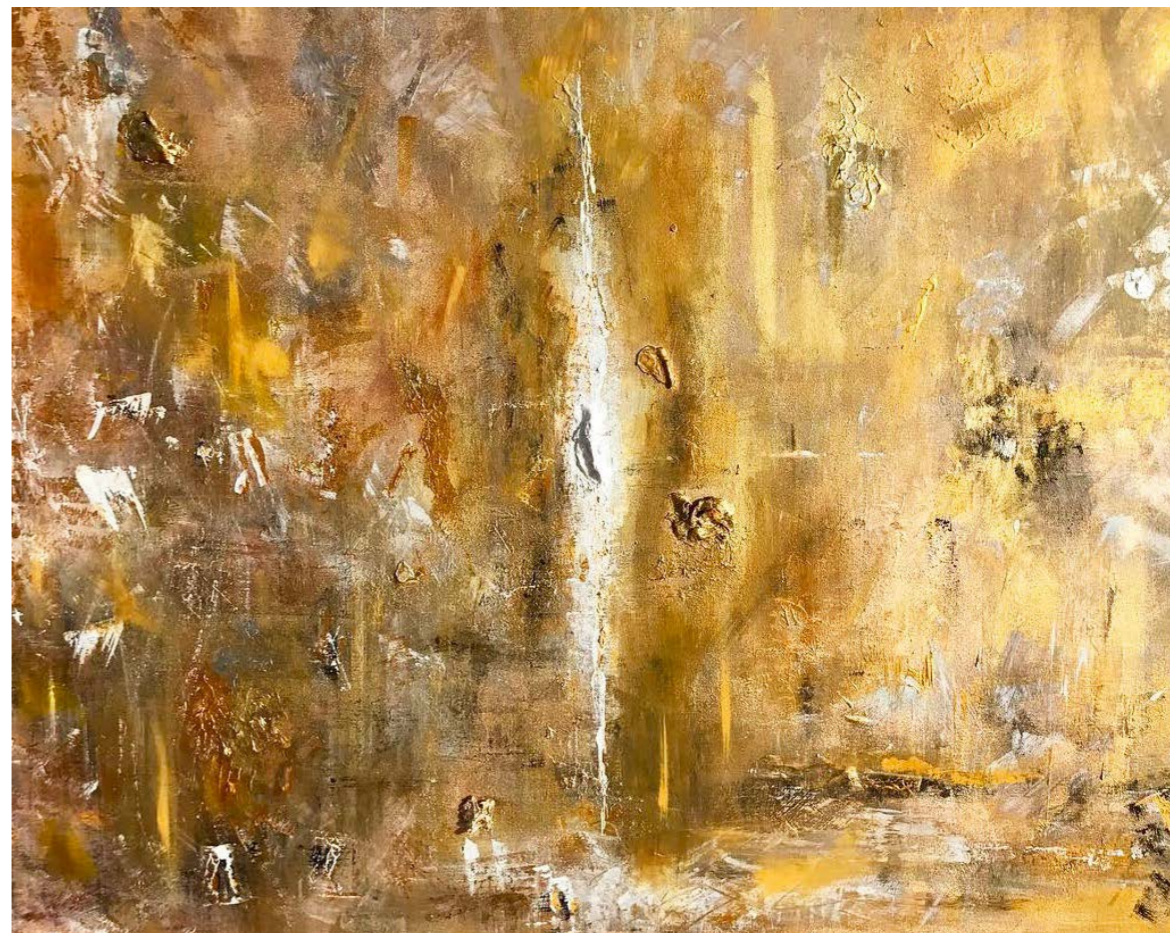


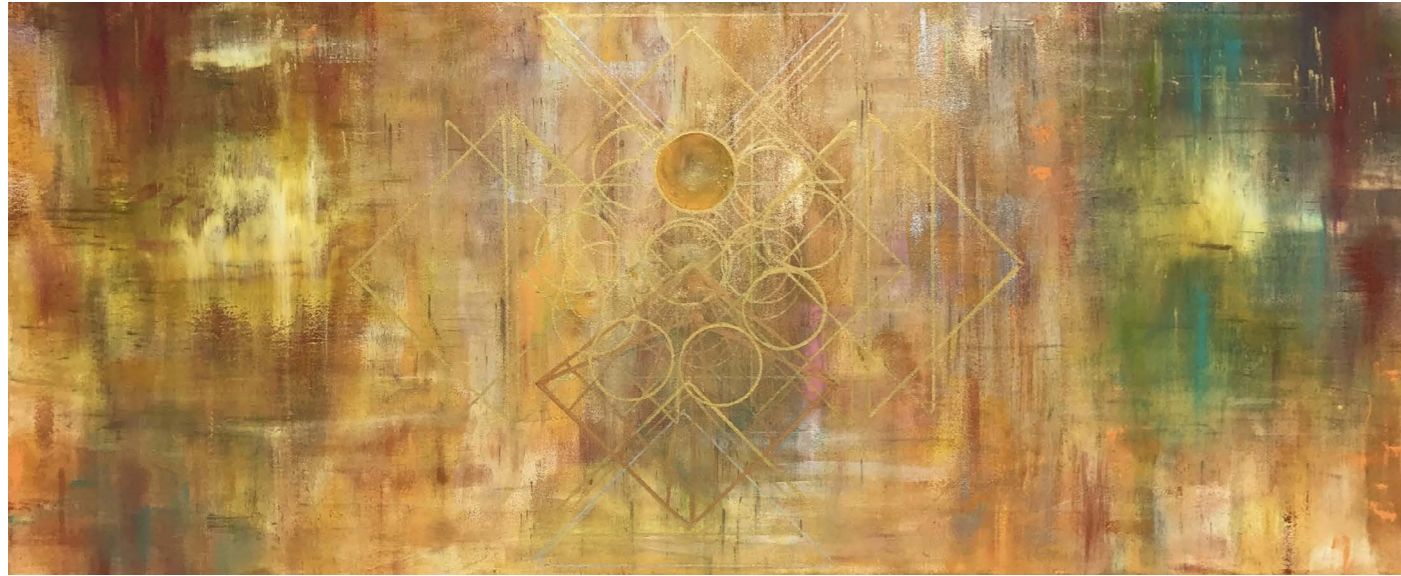
Acrylic and Resin, 40 x 40 cm

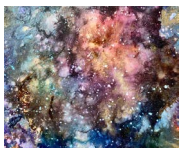


Acrylic and Mixed Media, 60 x 60 cm









Web Sites

filipadecarvalho.com

thesculpturefactory.org

Email

artist@filipadecarvalho.com

Instagram

[@filipadecarvalhoart](https://www.instagram.com/filipadecarvalhoart)

Designer

www.bunddesign.com

Photographers

Paintings: Filipa Faria de Carvalho

Portrait: Carolina Batista

Cover Credits

Photographer: Filipa Faria de Carvalho

Ice, detail, 2019

Printer

www.alfaprint.pt

Copyright 2019 by Filipa Faria de Carvalho. All rights reserved. No part of this publication may be reproduced in any form without the prior written permission of the publisher. Views expressed are those of the respective contributors and are not necessarily shared by Filipa Faria de Carvalho

